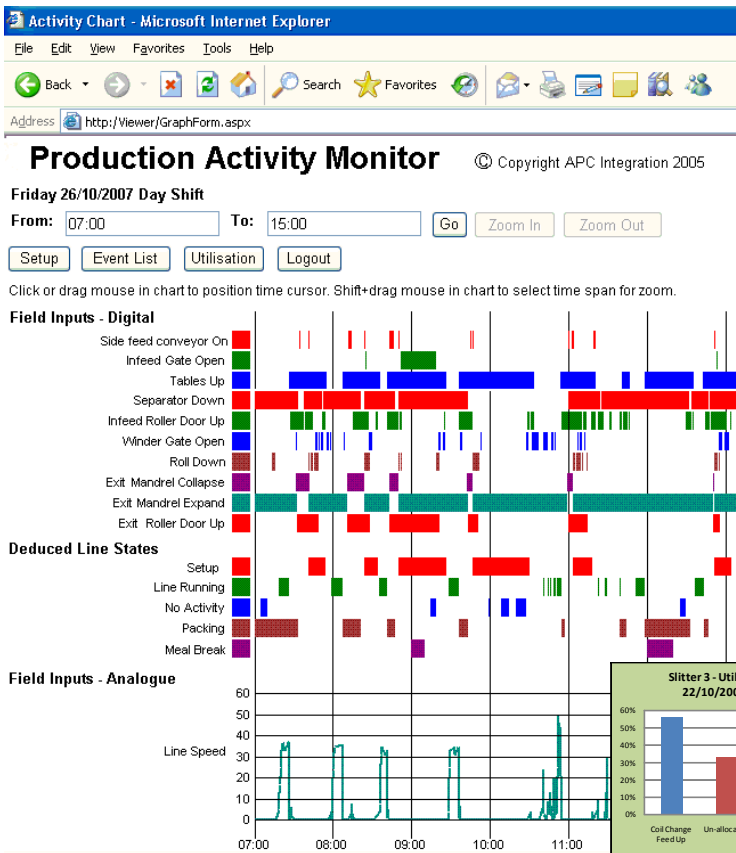


Production Activity Monitor

continuous improvement support tool

Production Activity Monitor is a fully automatic, full time, data collection system that requires no operator data entry. It is used to monitor and analyse shop floor activity.

- Rules can be applied to certain activities to deduce equipment status, eg set-up, run and pack leading to utilisation and OEE recording and charting by process and product
- A graphical representation (see sample below) is maintained in a searchable database for later retrieval, ideal for root cause analysis and continuous improvement activities
- Actual job or costing data can be fed to accounting, estimating and scheduling systems
- Data is recorded by plant, date, shift and production line, ideal for benchmarking



Sample PAM screen

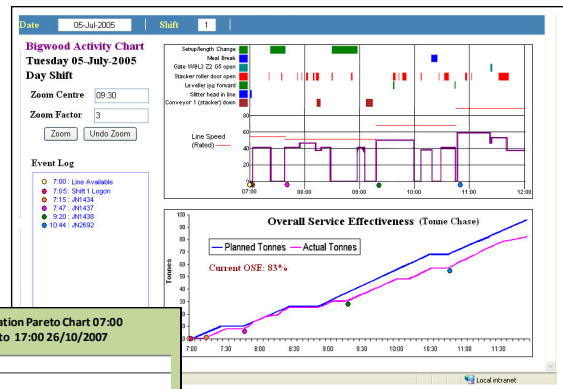
Pereto Chart

Key Benefits:

Base improvement decisions on unambiguous accurate data

Accelerate operational performance initiatives and capture actionable insight

Quickly unlock hidden capacity, increase productivity without additional capital investment



Operator Dashboard

APC Integration has over 20 years experience in production process monitoring and control.

Other system features:

- Easy to integrate with SCADA (via MODBUS interface) and MES systems (via ISA S95)
- Can be applied to manual work environments, ideal for lines that are highly operator dependant
- Visual and unambiguous nature of system makes it perfect for Operator Dashboards
- Options exist for operator comment input and a maintenance management system interface



To discuss your application please call

Dan Moriarty on (08) 8366 2300

sales@apci.com.au www.apci.com.au

Automation & Process Control Integration Pty. Ltd
40 Stepney Street, Stepney, SA 5069 Ph:(08) 8366 2300