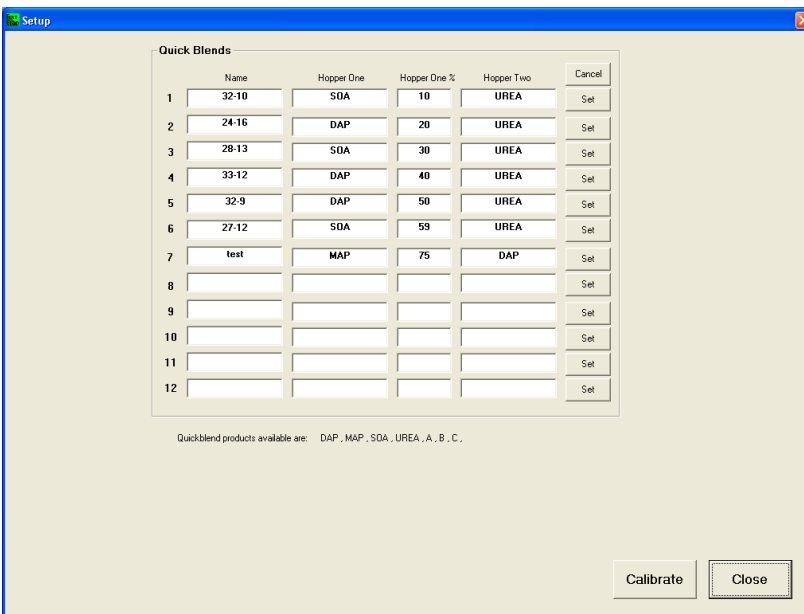
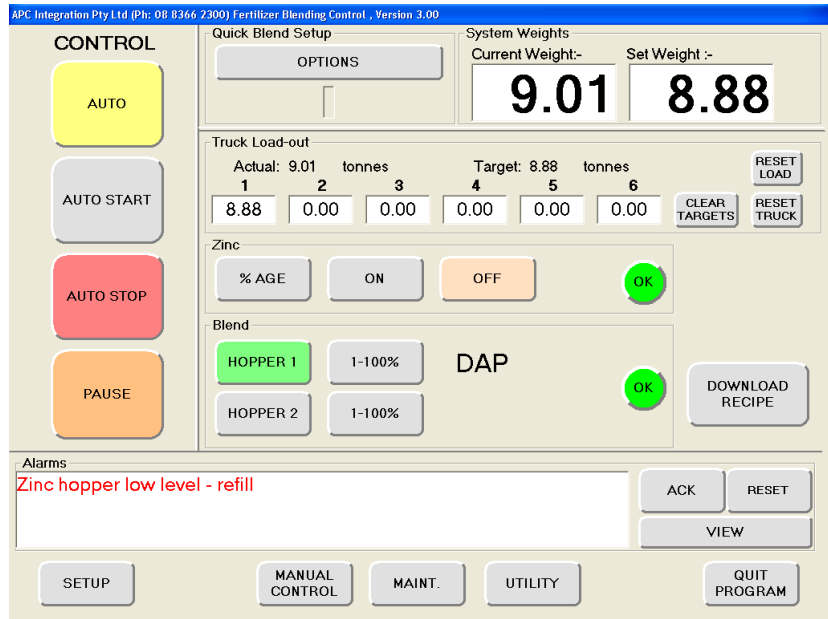


Fertblend is a product blending and outloading control system, developed by APCI over the last 8 years.

Fertblend is a modular system that can accurately blend a combination of base and elemental products including adding products like fungicide.

Fertblend has a “quickblend” recipe feature to speed up blend selection, including blend confirmation before each load can commence.



Fertblend is controlled via an operator interface touchscreen.

Fertblend can be configured for use with a PC based or proprietary touchscreen.

Fertblend can interface with other factory data systems eg; SCADA or manufacturing execution systems like S.A.P.

Fertblend can accommodate a wide range of plant flow rates. It can also automatically reduce the overall the plant flow rate to match the maximum flow rate of a blended product.

Fertblend can weigh the blended product direct from the hoppers without a weighbridge to an accuracy of 0.5% (typical accuracy with extended commissioning).

Fertblend automatically recovers from hopper low level conditions and operator initiated load out pauses without the need to restart the run.

Fertblend can handle up to 10 products per base and elemental (auger type) hopper. This eliminates the need to have separate hoppers for each base product.

Fertblend can be applied to conveyor style hoppers but gives superior performance with rotary valve hoppers. (Weighing is only available with rotary valve hoppers).



Fertblend can accommodate various configurations of plant equipment including conveyors, elevators, augers and pumps.

Fertblend has a comprehensive plant alarm annunciation and history screen.

Fertblend can be optioned with the following features to suit customers requirements:

- Conveyor under speed detection and recovery.
- Elevator slippage or under speed detection and recovery.
- Blocked valve detection.
- Multiple truck load out weigh set-points including driver signalling via beacons.
- Radio control for hopper screen vibrator start and system pausing.
- Motor isolator feedback.

Fertblend as a control system, complies with all requirements of AS 4024 – 2006 Safety of Machinery. A control system risk assessment and operation manual is supplied.

Fertblend is supported by the APCI service department. APCI can provide pre-season calibration, preventative maintenance and breakdown maintenance services.